

B-ULTRASOUND DIAGNOSTIC SYSTEM

CMS-600 PLUS



CPAKB
CARA PEMBUATAN
ALAT KESEHATAN
YANG BAIK
HK.02.04/VI/011/2016
PT. SINKO PRIMA ALLOY



Technical Specification

Model	CMS-600 PLUS	
Layar	TFT-LCD 12,1 Inch	
Display Modes	B,2B,4B,B+M,M and PW	
Storage	500 MB	
Cine Review	256 frames	
Depth Adjustment	Adjustable real time B,2B,4B,B+M,M and PW	
Image Conversion	Up/Down flip, Left/Right flip, 90° Rotate	
Language Conversion	Chinese, English, France, Deutsch, Italiano, Polski, Espanol, Portuguese, Pyccknn (Multilanguage)	
Focus Position	16 levels to adjust	
Software Packages	Obstetric, small part, gynecology, pediatric, cardiology, urology or vascular	
Measurement	B mode	Distance, circumference, area, volume, ratio, % Stenosis, histogram and angle
	M mode	Distance, time, slope and heart rate
	D mode/PW	Time, heart rate, velocity, acceleration, trace and RI
Annotations	Patient name, age, sex, time, date, hospital name, ID, accession #, Ref MD, Admission #	
Daya	33.1 ~ 34,5 W	
Input Power	0.6 ~ 0,3 A	
Power	100V~240V , 50Hz	
Dimension	Tanpa Probe, 330(L)x210(W)x310(H)	
	Dengan Probe 400(L)x210(W)x310(H)	
Weight	Tanpa Probe 6,9 kg , Dengan Probe 7,1 kg	
Working	Temperature	+5°C ~ +40°C(+41°F~+104°F)
	Humidity	25% RH ~ 80% RH
	Atmosphere	860 hPa ~ 1060 hPa
Storage	Temperature	-20°C ~ +55°C(-4°F ~ +131°F)
	Humidity	25% RH ~ 93% RH
	Atmosphere	700 hPa ~ 1060 hPa



- Powerful technologies to increase your diagnostic confidence
 - Phase Inversion Harmonic Imaging technology provides best-in-class image quality
 - PW Doppler supplies more hemodynamics information
 - Five-frequency transducers increase versatility



- Go anywhere you need to go
 - Compact and lightweight design facilitates mobility
 - Built-in battery provides up to two hours of imaging
 - Large capacity data storage



- Intuitive user-friendly design
 - One touch image optimization via smart image processing key
 - Backlit, easy-to-use control panel
 - User-defined keys to customize your work-flow



- Practical tools enhance efficiency
 - Intelligent 8-segment TGC for precise adjustment
 - Multi-format data transfer via USB and DICOM
 - Multiple-pseudo-color options enhance image presentation

B-ULTRASOUND DIAGNOSTIC SYSTEM

CMS-600 PLUS

+LINEAR PROBE



CPAKB
CARA PEMBUATAN
ALAT KESEHATAN
YANG BAIK
HK.02.04/VI/011/2016
PT. SINKO PRIMA ALLOY



Technical Specification

Model	CMS-600 PLUS	
Layar	TFT-LCD 12,1 Inch	
Display Modes	B,2B,4B,B+M,M and PW	
Storage	500 MB	
Cine Review	256 frames	
Depth Adjustment	Adjustable real time B,2B,4B,B+M,M and PW	
Image Conversion	Up/Down flip, Left/Right flip, 90° Rotate	
Language Conversion	Chinese, English, France, Deutsch, Italiano, Polski, Espanol, Portuguese, Pyccknn (Multilanguage)	
Focus Position	16 levels to adjust	
Software Packages	Obstetric, small part, gynecology, pediatric, cardiology, urology or vascular	
Measurement	B mode	Distance, circumference, area, volume, ratio, % Stenosis, histogram and angle
	M mode	Distance, time, slope and heart rate
	D mode/PW	Time, heart rate, velocity, acceleration, trace and RI
Annotations	Patient name, age, sex, time, date, hospital name, ID, accession #, Ref MD, Admission #	
Daya	33.1 ~ 34,5 W	
Input Power	0.6 ~ 0,3 A	
Power	100V~240V , 50Hz	
Dimension	Tanpa Probe, 330(L)x210(W)x310(H)	
	Dengan Probe 400(L)x210(W)x310(H)	
Weight	Tanpa Probe 6,9 kg , Dengan Probe 7,1 kg	
Working	Temperature	+5°C ~ +40°C(+41°F~+104°F)
	Humidity	25% RH ~ 80% RH
	Atmosphere	860 hPa ~ 1060 hPa
Storage	Temperature	-20°C ~ +55°C(-4°F ~ +131°F)
	Humidity	25% RH ~ 93% RH
	Atmosphere	700 hPa ~ 1060 hPa



- Powerful technologies to increase your diagnostic confidence
 - Phase Inversion Harmonic Imaging technology provides best-in-class image quality
 - PW Doppler supplies more hemodynamics information
 - Five-frequency transducers increase versatility



- Go anywhere you need to go
 - Compact and lightweight design facilitates mobility
 - Built-in battery provides up to two hours of imaging
 - Large capacity data storage



- Intuitive user-friendly design
 - One touch image optimization via smart image processing key
 - Backlit, easy-to-use control panel
 - User-defined keys to customize your work-flow



- Practical tools enhance efficiency
 - Intelligent 8-segment TGC for precise adjustment
 - Multi-format data transfer via USB and DICOM
 - Multiple-pseudo-color options enhance image presentation

B-ULTRASOUND DIAGNOSTIC SYSTEM

CMS-600 PLUS

+ SONY PRINTER



CPAKB
CARA PEMBUATAN
ALAT KESEHATAN
YANG BAIK
HK.02.04/VI/011/2016
PT. SINKO PRIMA ALLOY



Technical Specification

Model	CMS-600 PLUS	
Layar	TFT-LCD 12,1 Inch	
Display Modes	B,2B,4B,B+M,M and PW	
Storage	500 MB	
Cine Review	256 frames	
Depth Adjustment	Adjustable real time B,2B,4B,B+M,M and PW	
Image Conversion	Up/Down flip, Left/Right flip, 90° Rotate	
Language Conversion	Chinese, English, France, Deutsch, Italiano, Polski, Espanol, Portuguese, Pyccknn (Multilanguage)	
Focus Position	16 levels to adjust	
Software Packages	Obstetric, small part, gynecology, pediatric, cardiology, urology or vascular	
Measurement	B mode	Distance, circumference, area, volume, ratio, % Stenosis, histogram and angle
	M mode	Distance, time, slope and heart rate
	D mode/PW	Time, heart rate, velocity, acceleration, trace and RI
Annotations	Patient name, age, sex, time, date, hospital name, ID, accession #, Ref MD, Admission #	
Daya	33.1 ~ 34,5 W	
Input Power	0.6 ~ 0,3 A	
Power	100V~240V , 50Hz	
Dimension	Tanpa Probe, 330(L)x210(W)x310(H)	
	Dengan Probe 400(L)x210(W)x310(H)	
Weight	Tanpa Probe 6,9 kg , Dengan Probe 7,1 kg	
Working	Temperature	+5°C ~ +40°C(+41°F~+104°F)
	Humidity	25% RH ~ 80% RH
	Atmosphere	860 hPa ~ 1060 hPa
Storage	Temperature	-20°C ~ +55°C(-4°F ~ +131°F)
	Humidity	25% RH ~ 93% RH
	Atmosphere	700 hPa ~ 1060 hPa



- Powerful technologies to increase your diagnostic confidence
 - Phase Inversion Harmonic Imaging technology provides best-in-class image quality
 - PW Doppler supplies more hemodynamics information
 - Five-frequency transducers increase versatility



- Go anywhere you need to go
 - Compact and lightweight design facilitates mobility
 - Built-in battery provides up to two hours of imaging
 - Large capacity data storage



- Intuitive user-friendly design
 - One touch image optimization via smart image processing key
 - Backlit, easy-to-use control panel
 - User-defined keys to customize your work-flow



- Practical tools enhance efficiency
 - Intelligent 8-segment TGC for precise adjustment
 - Multi-format data transfer via USB and DICOM
 - Multiple-pseudo-color options enhance image presentation

B-ULTRASOUND DIAGNOSTIC SYSTEM

CMS-600 PLUS

+SONY PRINTER+LINEAR PROBE



CPAKB
CARA PEMBUATAN
ALAT KESEHATAN
YANG BAIK
HK.02.04/VI/011/2016
PT. SINKO PRIMA ALLOY



KEMENKES RI
AKD 21102900256



84778/A/0001/UK/En



ISO9001:2015



ISO13485:2016
MS 181050 R

Technical Specification

Model	CMS-600 PLUS	
Layar	TFT-LCD 12,1 Inch	
Display Modes	B,2B,4B,B+M,M and PW	
Storage	500 MB	
Cine Review	256 frames	
Depth Adjustment	Adjustable real time B,2B,4B,B+M,M and PW	
Image Conversion	Up/Down flip, Left/Right flip, 90° Rotate	
Language Conversion	Chinese, English, France, Deutsch, Italiano, Polski, Espanol, Portuguese, Pyccknn (Multilanguage)	
Focus Position	16 levels to adjust	
Software Packages	Obstetric, small part, gynecology, pediatric, cardiology, urology or vascular	
Measure ment	B mode	Distance, circumference, area, volume, ratio, % Stenosis, histogram and angle
	M mode	Distance, time, slop and hearth rate
	D mode/PW	Time, hearth rate, velocity, acceleration, trace and RI
Annotations	Patient name, age, sex, time, date, hospital name, ID, accession #, Ref MD, Admission #	
Daya	33.1 ~ 34,5 W	
Input Power	0.6 ~ 0,3 A	
Power	100V~240V , 50Hz	
Dimension	Tanpa Probe, 330(L)x210(W)x310(H)	
	Dengan Probe 400(L)x210(W)x310(H)	
Weight	Tanpa Probe 6,9 kg , Dengan Probe 7,1 kg	
Working	Temperature	+5°C ~ +40°C(+41°F~+104°F)
	Humidity	25% RH ~ 80% RH
	Atmosphere	860 hPa ~ 1060 hPa
Storage	Temperature	-20°C ~ +55°C(-4°F ~ +131°F)
	Humidity	25% RH ~ 93% RH
	Atmosphere	700 hPa ~ 1060 hPa



- Powerful technologies to increase your diagnostic confidence
 - Phase Inversion Harmonic Imaging technology provides best-in-class image quality
 - PW Doppler supplies more hemodynamics information
 - Five-frequency transducers increase versatility



- Go anywhere you need to go
 - Compact and lightweight design facilitates mobility
 - Built-in battery provides up to two hours of imaging
 - Large capacity data storage



- Intuitive user-friendly design
 - One touch image optimization via smart image processing key
 - Backlit, easy-to-use control panel
 - User-defined keys to customize your work-flow



- Practical tools enhance efficiency
 - Intelligent 8-segment TGC for precise adjustment
 - Multi-format data transfer via USB and DICOM
 - Multiple-pseudo-color options enhance image presentation

B-ULTRASOUND DIAGNOSTIC SYSTEM

CMS-600 PLUS + SONY PRINTER + TROLLEY



CPAKB
CARA PEMBUATAN
ALAT KESEHATAN
YANG BAIK
HK.02.04/VI/011/2016
PT. SINKO PRIMA ALLOY



Technical Specification

Model	CMS-600 PLUS	
Layar	TFT-LCD 12,1 Inch	
Display Modes	B,2B,4B,B+M,M and PW	
Storage	500 MB	
Cine Review	256 frames	
Depth Adjustment	Adjustable real time B,2B,4B,B+M,M and PW	
Image Conversion	Up/Down flip, Left/Right flip, 90° Rotate	
Language Conversion	Chinese, English, France, Deutsch, Italiano, Polski, Espanol, Portuguese, Pyccknn (Multilanguage)	
Focus Position	16 levels to adjust	
Software Packages	Obstetric, small part, gynecology, pediatric, cardiology, urology or vascular	
Measurement	B mode	Distance, circumference, area, volume, ratio, % Stenosis, histogram and angle
	M mode	Distance, time, slope and heart rate
	D mode/PW	Time, heart rate, velocity, acceleration, trace and RI
Annotations	Patient name, age, sex, time, date, hospital name, ID, accession #, Ref MD, Admission #	
Daya	33.1 ~ 34,5 W	
Input Power	0.6 ~ 0,3 A	
Power	100V~240V , 50Hz	
Dimension	Tanpa Probe, 330(L)x210(W)x310(H)	
	Dengan Probe 400(L)x210(W)x310(H)	
Weight	Tanpa Probe 6,9 kg , Dengan Probe 7,1 kg	
Working	Temperature	+5°C ~ +40°C(+41°F~+104°F)
	Humidity	25% RH ~ 80% RH
	Atmosphere	860 hPa ~ 1060 hPa
Storage	Temperature	-20°C ~ +55°C(-4°F ~ +131°F)
	Humidity	25% RH ~ 93% RH
	Atmosphere	700 hPa ~ 1060 hPa



- Powerful technologies to increase your diagnostic confidence
 - Phase Inversion Harmonic Imaging technology provides best-in-class image quality
 - PW Doppler supplies more hemodynamics information
 - Five-frequency transducers increase versatility



- Go anywhere you need to go
 - Compact and lightweight design facilitates mobility
 - Built-in battery provides up to two hours of imaging
 - Large capacity data storage



- Intuitive user-friendly design
 - One touch image optimization via smart image processing key
 - Backlit, easy-to-use control panel
 - User-defined keys to customize your work-flow



- Practical tools enhance efficiency
 - Intelligent 8-segment TGC for precise adjustment
 - Multi-format data transfer via USB and DICOM
 - Multiple-pseudo-color options enhance image presentation

B-ULTRASOUND DIAGNOSTIC SYSTEM

CMS-600 PLUS +SONY PRINTER+TROLLEY +UPS



Saya made in INDONESIA
Produksi Indonesia



CPAKB
CARA PEMBUATAN
ALAT KESEHATAN
YANG BAIK
HK.02.04/VI/011/2016
PT. SINKO PRIMA ALLOY



KEMENTERIAN
KESEHATAN
REPUBLIK
INDONESIA
KEMENKES RI
AKD 21102900256




84778/A/0001/UK/En



ISO 9001
REGISTERED FIRM
ISO9001:2015



ISO13485:2016
MS 181050 R
globalgroup
ISO 13485

Technical Specification

Model	CMS-600 PLUS	
Layar	TFT-LCD 12,1 Inch	
Display Modes	B,2B,4B,B+M,M and PW	
Storage	500 MB	
Cine Review	256 frames	
Depth Adjustment	Adjustable real time B,2B,4B,B+M,M and PW	
Image Conversion	Up/Down flip, Left/Right flip, 90° Rotate	
Language Conversion	Chinese, English, France, Deutsch, Italiano, Polski, Espanol, Portuguese, Pyccknn (Multilanguage)	
Focus Position	16 levels to adjust	
Software Packages	Obstetric, small part, gynecology, pediatric, cardiology, urology or vascular	
Measurement	B mode	Distance, circumference, area, volume, ratio, % Stenosis, histogram and angle
	M mode	Distance, time, slope and heart rate
	D mode/PW	Time, heart rate, velocity, acceleration, trace and RI
Annotations	Patient name, age, sex, time, date, hospital name, ID, accession #, Ref MD, Admission #	
Daya	33.1 ~ 34,5 W	
Input Power	0.6 ~ 0,3 A	
Power	100V~240V , 50Hz	
Dimension	Tanpa Probe, 330(L)x210(W)x310(H)	
	Dengan Probe 400(L)x210(W)x310(H)	
Weight	Tanpa Probe 6,9 kg , Dengan Probe 7,1 kg	
Working	Temperature	+5°C ~ +40°C(+41°F~+104°F)
	Humidity	25% RH ~ 80% RH
	Atmosphere	860 hPa ~ 1060 hPa
Storage	Temperature	-20°C ~ +55°C(-4°F ~ +131°F)
	Humidity	25% RH ~ 93% RH
	Atmosphere	700 hPa ~ 1060 hPa



- Powerful technologies to increase your diagnostic confidence
 - Phase Inversion Harmonic Imaging technology provides best-in-class image quality
 - PW Doppler supplies more hemodynamics information
 - Five-frequency transducers increase versatility



- Go anywhere you need to go
 - Compact and lightweight design facilitates mobility
 - Built-in battery provides up to two hours of imaging
 - Large capacity data storage



- Intuitive user-friendly design
 - One touch image optimization via smart image processing key
 - Backlit, easy-to-use control panel
 - User-defined keys to customize your work-flow

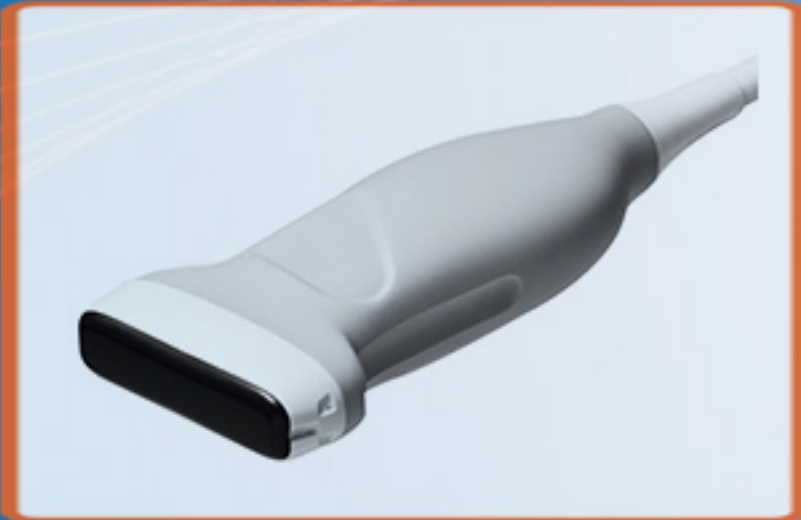


- Practical tools enhance efficiency
 - Intelligent 8-segment TGC for precise adjustment
 - Multi-format data transfer via USB and DICOM
 - Multiple-pseudo-color options enhance image presentation

B-ULTRASOUND DIAGNOSTIC SYSTEM

CMS-600 PLUS

+ SONY PRINTER + TROLLEY + UPS
+ LINEAR PROBE



Saya made in INDONESIA
Produksi Indonesia



CPAKB
CARA PEMBUATAN
ALAT KESEHATAN
YANG BAIK
HK.02.04/VI/011/2016
PT. SINKO PRIMA ALLOY



KEMENTERIAN
KESEHATAN
REPUBLIK
INDONESIA
KEMENKES RI
AKD 21102900256




84778/A/0001/UK/En



ISO 9001
REGISTERED FIRM
ISO9001:2015



ISO13485:2016
MS 181050 R
globalgroup
ISO 13485

Technical Specification

Model	CMS-600 PLUS	
Layar	TFT-LCD 12,1 Inch	
Display Modes	B,2B,4B,B+M,M and PW	
Storage	500 MB	
Cine Review	256 frames	
Depth Adjustment	Adjustable real time B,2B,4B,B+M,M and PW	
Image Conversion	Up/Down flip, Left/Right flip, 90° Rotate	
Language Conversion	Chinese, English, France, Deutsch, Italiano, Polski, Espanol, Portuguese, Pyccknn (Multilanguage)	
Focus Position	16 levels to adjust	
Software Packages	Obstetric, small part, gynecology, pediatric, cardiology, urology or vascular	
Measurement	B mode	Distance, circumference, area, volume, ratio, % Stenosis, histogram and angle
	M mode	Distance, time, slope and heart rate
	D mode/PW	Time, heart rate, velocity, acceleration, trace and RI
Annotations	Patient name, age, sex, time, date, hospital name, ID, accession #, Ref MD, Admission #	
Daya	33.1 ~ 34,5 W	
Input Power	0.6 ~ 0,3 A	
Power	100V~240V , 50Hz	
Dimension	Tanpa Probe, 330(L)x210(W)x310(H)	
	Dengan Probe 400(L)x210(W)x310(H)	
Weight	Tanpa Probe 6,9 kg , Dengan Probe 7,1 kg	
Working	Temperature	+5°C ~ +40°C(+41°F~+104°F)
	Humidity	25% RH ~ 80% RH
	Atmosphere	860 hPa ~ 1060 hPa
Storage	Temperature	-20°C ~ +55°C(-4°F ~ +131°F)
	Humidity	25% RH ~ 93% RH
	Atmosphere	700 hPa ~ 1060 hPa



- Powerful technologies to increase your diagnostic confidence
 - Phase Inversion Harmonic Imaging technology provides best-in-class image quality
 - PW Doppler supplies more hemodynamics information
 - Five-frequency transducers increase versatility



- Go anywhere you need to go
 - Compact and lightweight design facilitates mobility
 - Built-in battery provides up to two hours of imaging
 - Large capacity data storage



- Intuitive user-friendly design
 - One touch image optimization via smart image processing key
 - Backlit, easy-to-use control panel
 - User-defined keys to customize your work-flow



- Practical tools enhance efficiency
 - Intelligent 8-segment TGC for precise adjustment
 - Multi-format data transfer via USB and DICOM
 - Multiple-pseudo-color options enhance image presentation

B-ULTRASOUND DIAGNOSTIC SYSTEM

CMS-600 PLUS

+ TROLLEY



CPAKB
CARA PEMBUATAN
ALAT KESEHATAN
YANG BAIK
HK.02.04/VI/011/2016
PT. SINKO PRIMA ALLOY



Technical Specification

Model	CMS-600 PLUS	
Layar	TFT-LCD 12,1 Inch	
Display Modes	B,2B,4B,B+M,M and PW	
Storage	500 MB	
Cine Review	256 frames	
Depth Adjustment	Adjustable real time B,2B,4B,B+M,M and PW	
Image Conversion	Up/Down flip, Left/Right flip, 90° Rotate	
Language Conversion	Chinese, English, France, Deutsch, Italiano, Polski, Espanol, Portuguese, Pyccknn (Multilanguage)	
Focus Position	16 levels to adjust	
Software Packages	Obstetric, small part, gynecology, pediatric, cardiology, urology or vascular	
Measurement	B mode	Distance, circumference, area, volume, ratio, % Stenosis, histogram and angle
	M mode	Distance, time, slope and heart rate
	D mode/PW	Time, heart rate, velocity, acceleration, trace and RI
Annotations	Patient name, age, sex, time, date, hospital name, ID, accession #, Ref MD, Admission #	
Daya	33.1 ~ 34,5 W	
Input Power	0.6 ~ 0,3 A	
Power	100V~240V , 50Hz	
Dimension	Tanpa Probe, 330(L)x210(W)x310(H)	
	Dengan Probe 400(L)x210(W)x310(H)	
Weight	Tanpa Probe 6,9 kg , Dengan Probe 7,1 kg	
Working	Temperature	+5°C ~ +40°C(+41°F~+104°F)
	Humidity	25% RH ~ 80% RH
	Atmosphere	860 hPa ~ 1060 hPa
Storage	Temperature	-20°C ~ +55°C(-4°F ~ +131°F)
	Humidity	25% RH ~ 93% RH
	Atmosphere	700 hPa ~ 1060 hPa



- Powerful technologies to increase your diagnostic confidence
 - Phase Inversion Harmonic Imaging technology provides best-in-class image quality
 - PW Doppler supplies more hemodynamics information
 - Five-frequency transducers increase versatility



- Go anywhere you need to go
 - Compact and lightweight design facilitates mobility
 - Built-in battery provides up to two hours of imaging
 - Large capacity data storage



- Intuitive user-friendly design
 - One touch image optimization via smart image processing key
 - Backlit, easy-to-use control panel
 - User-defined keys to customize your work-flow



- Practical tools enhance efficiency
 - Intelligent 8-segment TGC for precise adjustment
 - Multi-format data transfer via USB and DICOM
 - Multiple-pseudo-color options enhance image presentation